

Morgan County African American Museum
Presents

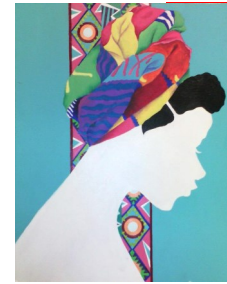
**Diona LaTrell Sheats &
"Pieces of Me"
EXHIBIT**

October 11th — Dec 30th

Diona LaTrell Sheats, a native of Madison, Georgia and recent graduate of Georgia Southern University is an up and coming contemporary artist. The collection will include some of her most recent pieces that focus on the African Patterns and Silhouettes. Sheats will begin the Masters of Art Therapy program at Georgia College & University in the fall of 2015 and has the goal to one day provide Art Therapeutic services to abused children under her own nonprofit program.

**~~OPENING RECEPTION~~
Sunday, October 11th, 2015
2:30-4:30pm**

**Morgan County African American Museum
~Perriman Room~**



Morgan County African American Museum
Presents

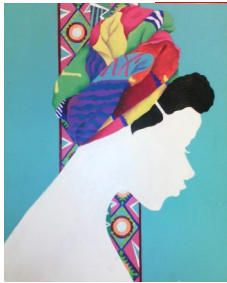
**Diona LaTrell Sheats &
"Pieces of Me"
EXHIBIT**

October 11th — Dec 30th

Diona LaTrell Sheats, a native of Madison, Georgia and recent graduate of Georgia Southern University is an up and coming contemporary artist. The collection will include some of her most recent pieces that focus on the African Patterns and Silhouettes. Sheats will begin the Masters of Art Therapy program at Georgia College & University in the fall of 2015 and has the goal to one day provide Art Therapeutic services to abused children under her own nonprofit program.

**~~OPENING RECEPTION~~
Sunday, October 11th, 2015
2:30-4:30pm**

**Morgan County African American Museum
~Perriman Room~**



Morgan County African American Museum
Presents

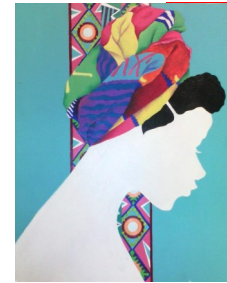
**Diona LaTrell Sheats &
"Pieces of Me"
EXHIBIT**

October 11th — Dec 30th

Diona LaTrell Sheats, a native of Madison, Georgia and recent graduate of Georgia Southern University is an up and coming contemporary artist. The collection will include some of her most recent pieces that focus on the African Patterns and Silhouettes. Sheats will begin the Masters of Art Therapy program at Georgia College & University in the fall of 2015 and has the goal to one day provide Art Therapeutic services to abused children under her own nonprofit program.

**~~OPENING RECEPTION~~
Sunday, October 11th, 2015
2:30-4:30pm**

**Morgan County African American Museum
~Perriman Room~**



Morgan County African American Museum
Presents

**Diona LaTrell Sheats &
"Pieces of Me"
EXHIBIT**

October 11th — Dec 30th

Diona LaTrell Sheats, a native of Madison, Georgia and recent graduate of Georgia Southern University is an up and coming contemporary artist. The collection will include some of her most recent pieces that focus on the African Patterns and Silhouettes. Sheats will begin the Masters of Art Therapy program at Georgia College & University in the fall of 2015 and has the goal to one day provide Art Therapeutic services to abused children under her own nonprofit program.

**~~OPENING RECEPTION~~
Sunday, October 11th, 2015
2:30-4:30pm**

**Morgan County African American Museum
~Perriman Room~**





156 Academy Street
PO Box 482
Madison GA 30650
706-342-9191
www.mcaam.org

PLEASE
PLACE
STAMP
HERE



156 Academy Street
PO Box 482
Madison GA 30650
706-342-9191
www.mcaam.org

PLEASE
PLACE
STAMP
HERE



156 Academy Street
PO Box 482
Madison GA 30650
706-342-9191
www.mcaam.org

PLEASE
PLACE
STAMP
HERE



156 Academy Street
PO Box 482
Madison GA 30650
706-342-9191
www.mcaam.org

PLEASE
PLACE
STAMP
HERE